

(SVHC)

CANEC24022812802

2024 10 23

1

14

李嘉欣

Jessie-JX Li

scan to see the report



3321DD5D

(SVHC)

REACH 14 SVHC	
------------------	--



(SVHC)

1.

<http://echa.europa.eu/web/guest/candidate-list-table>

2. REACH

2.1

1907/2006 EC 33 57 59
0.1%

1907/2006 EC 57
59 (a) 1 / / 7 4 (b)
0.1%

2021 SVHC 1 5 0.1% w/w
SCIP 2008/98/EC ECHA

2.2

SVHC

31 1907/2006 REACH

2.3

0.1% (w/w) / 1272/2008 CLP
1907/2006 REACH

(SDS)

- 1272/2008 CLP
- 1272/2008 CLP
1272/2008 CLP ;
- 1272/2008 CLP

(a) (w/w)

(b) PBT vPvB (w/w)

(c)

(w/w)

(d)

3. SVHC

SVHC

SVHC

(SVHC)

SVHC

		CAS No.	001 (%)	RL (%)
-	SVHC	-	ND	-

SVHC

		CAS No.	001 (%)	RL (%)
/	SVHC	-	ND	-

SVHC

		CAS No.	002 (%)	RL (%)
XIX		7439-92-1	0.023	0.005
-	SVHC	-	ND	-

SVHC

		CAS No.	002 (%)	RL (%)
/	SVHC	-	ND	-

(1) SVHC RL SVHC SVHC
 (2) RL = (SVHC RL)
 ND = (RL) ND SVHC
 (3) *
 **

ICP-OES ICP-OES
 RL = 0.005% ((VI))
 RL = 0.0005% RL=0.0025%() RL=0.050%
 (4) § (CAS No.: 90-94-8) (CAS No.: 101-61-1)
 SVHC

(5)
 (6) /
 (7) / = SVHC

1501 3 101 A. 198 ; B.
 ILAC-G8:09/2019 w=0

(SVHC)

SVHC:

			CAS No.	RL (%)
I	1	4,4'- (MDA)	101-77-9	0.050
I	2	2,4,6- -5- ()	81-15-2	0.050
I	3	C10-13 ()	85535-84-8	0.050
I	4		120-12-7	0.050
I	5	(BBP)	85-68-7	0.050
I	6	(2-) (DEHP)	117-81-7	0.050
I	7	(TBTO)	56-35-9	0.050
I	8	*	7646-79-9	0.005
I	9	*	1303-28-2	0.005
I	10	*	1327-53-3	0.005
I	11	(DBP)	84-74-2	0.050
I	12	(HBCDD) - -HBCDD)	-	0.050
I	13	*	7784-40-9	0.005
I	14	*	10588-01-9 /7789-12-0	0.005
I	15	*	15606-95-8	0.005
II	16	2,4-	121-14-2	0.050
II	17	**	90640-80-5	0.050
II	18	**	90640-81-6	0.050
II	19	**	91995-15-2	0.050
II	20	**	91995-17-4	0.050
II	21	**	90640-82-7	0.050
II	22		84-69-5	0.050
II	23	*	7758-97-6	0.005
II	24	(C.I. 104)*	12656-85-8	0.005
II	25	(C.I. 34)*	1344-37-2	0.005
II	26	**	65996-93-2	0.050
II	27	(2-)	115-96-8	0.050
II	28		79-06-1	0.050
III	29	*	7789-09-5	0.005
III	30	*	-	0.005
III	31	*	12179-04-3 /1303-96-4 /1330-43-4	0.005
III	32	*	7789-00-6	0.005
III	33	*	7778-50-9	0.005
III	34	*	7775-11-3	0.005
III	35	*	12267-73-1	0.005
III	36		79-01-6	0.050
IV	37		110-80-5	0.050



(SVHC)

			CAS No.	RL (%)
VII	79		75-12-7	0.050
VII	80		17570-76-2	0.005
VII	81	N,N,N',N'-	-	



(SVHC)

			CAS No.	RL (%)
XII	157	2- -2- -4,6- (UV-320)	3846-71-7	0.050
XII	158	- (2-) (DOTE)	15571-58-1	0.050
XII	159	*	7790-79-6	0.005
XII	160	*	10124-36-4 /31119-53-6	0.005

XII



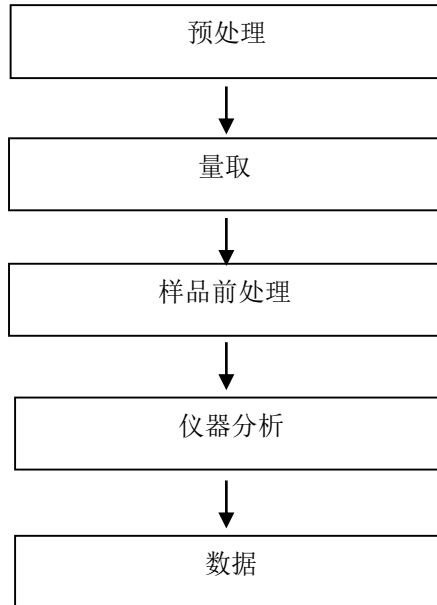
(SVHC)

			CAS No.	RL (%)
XIX	187	(D6)	540-97-6	0.050
XIX	188	(EDA)	107-15-3	0.050
XIX	189		7439-92-1	0.005
XIX	190	(D4)	556-67-2	0.050
XIX	191		61788-32-7	0.050
XX	192	1,7,7- -3-() [2.2.1] -2- (3-)	15087-24-8	0.050
XX	193	4,4'-(1,3-) (1,3-DMBBP)	6807-17-6	0.050
XX	194	(k) (BkF)	207-08-9	0.050
XX	195	(FLT)	206-44-0	0.050
XX	196	(PHE)	85-01-8	0.050
XX	197	(PYR)	129-00-0	0.050
XXI	198	2,3,3,3- -2-() () (HFPO-DA)	-	0.050
XXI	199	2-	110-49-6	0.050
XXI	200	4- (PTBP)	98-54-4	0.050
XXI	201	(4-) (TNPP)(4-)	-	0.050
XXII	202	2- -2- -4'-	119313-12-1	0.050
XXII	203	2- -1-(4-)-2- -1-	71868-10-5	0.050
XXII	204		71850-09-4	0.050
XXII	205		-	0.050
XXIII	206	1-	1072-63-5	0.050
XXIII	207	2-	693-98-1	0.050
XXIII	208		94-26-8	0.050
XXIII	209	() **	22673-19-4	0.050
XXIV	210		143-24-8	0.050
XXIV	211	() **	-	0.050
XXV	212	1,4-	123-91-1	0.050
XXV	213	(BMP); (TBNPA); 2,3- -1- (2,3-DBPA)	-	0.050
XXV	214		-	0.050
XXV	215	B	77-40-7	0.050
XXV	216		111-30-8	0.050
XXV	217	(MCCP)	-	0.050
XXV	218	*	13840-56-7	0.005
XXV	219	(PDDP)	-	0.050
XXVI	220	(±)-1,7,7- -3-[(4-)] [2.2.1] -2- / (4- MBC)	-	0.050
XXVI	221	2,2'- -(4- -6-) (DBMC)	119-47-1	0.050

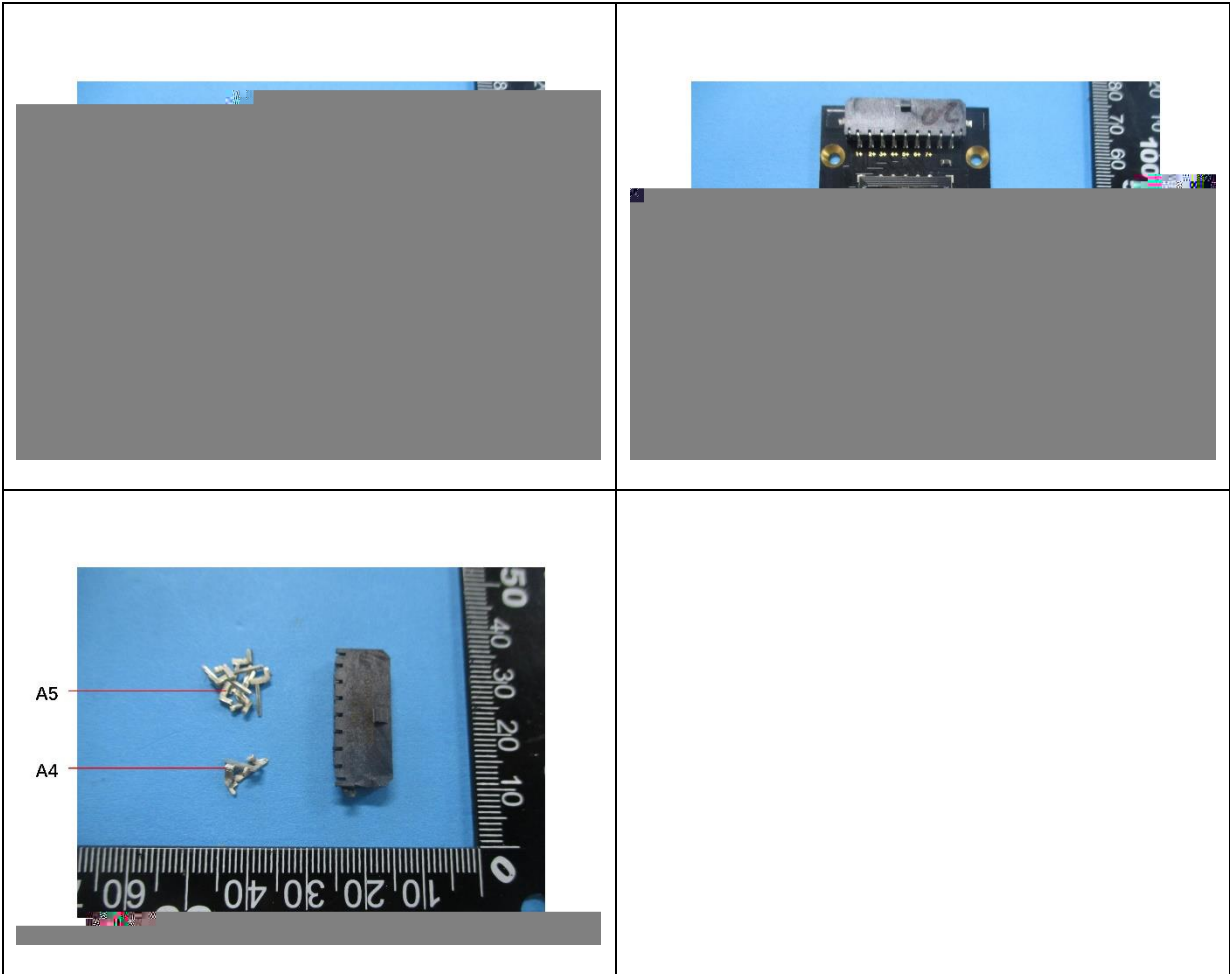
(SVHC)

			CAS No.	RL (%)
XXVI	222	S-([5.2.1.0'2,6] -3- -8(9)-) O-(2-) O-(2-)	255881-94-8	0.050
XXVI	223	- (2-)	1067-53-4	0.050
XXVII	224	N-	924-42-5	0.050
XXVIII	225	1,2- (2,4,6-)	37853-59-1	0.050
XXVIII	226	A	79-94-7	0.050
XXVIII	227	S	80-09-1	0.050
XXVIII	228	*	13701-59-2	0.005
XXVIII	229	(2-)	-	0.050
XXVIII	230		4247-02-3	0.050
XXVIII	231		108-78-1	0.050
XXVIII	232		-	0.050
XXVIII	233	*	-	0.050
XXIX	234	(4-)	80-07-9	0.050
XXIX	235	(2,4,6-)	75980-60-8	0.050
XXX	236	2,4,6-	732-26-3	0.050
XXX	237	2-(2'- -5'-) (UV-329)	3147-75-9	0.050
XXX	238	2-(4-)-2-()-1-(4-)- 1- (PI-379)	119344-86-4	0.050
XXX	239	(UV-326)	3896-11-5	0.050
XXX	240	2-	-	0.050
XXXI	241		80-43-3	0.050
/	242	6-[(C10-C13)- -(,)-2,5- -1-]	2156592-54-8	0.050
/	243	O,O,O-	597-82-0	0.050
/	244		107-51-7	0.050
/	245		338-83-0	0.050
/	246		192268-65-8	0.050
/	247	(4-)	-	0.050
/	248		115-86-6	0.050
/	249		108-46-3	0.050
/	250	()	17928-28-8	0.050
/	251		1873-88-7	0.050
/	252		141-62-8	0.050
/	253		141-63-9	0.050
/	254		107-46-0	0.050
/	255	*	10294-40-3	0.005

(SVHC)



(SVHC)



SGS
